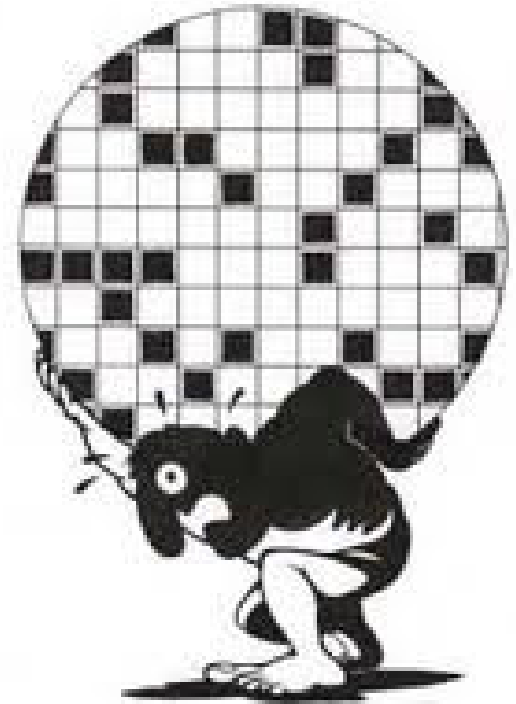


# Eclipse crossword

Come fare un cruciverba in poche mosse

Enrico Sitta



# Pre fase 1



- Scarica il software sul tuo pc

- Digitando

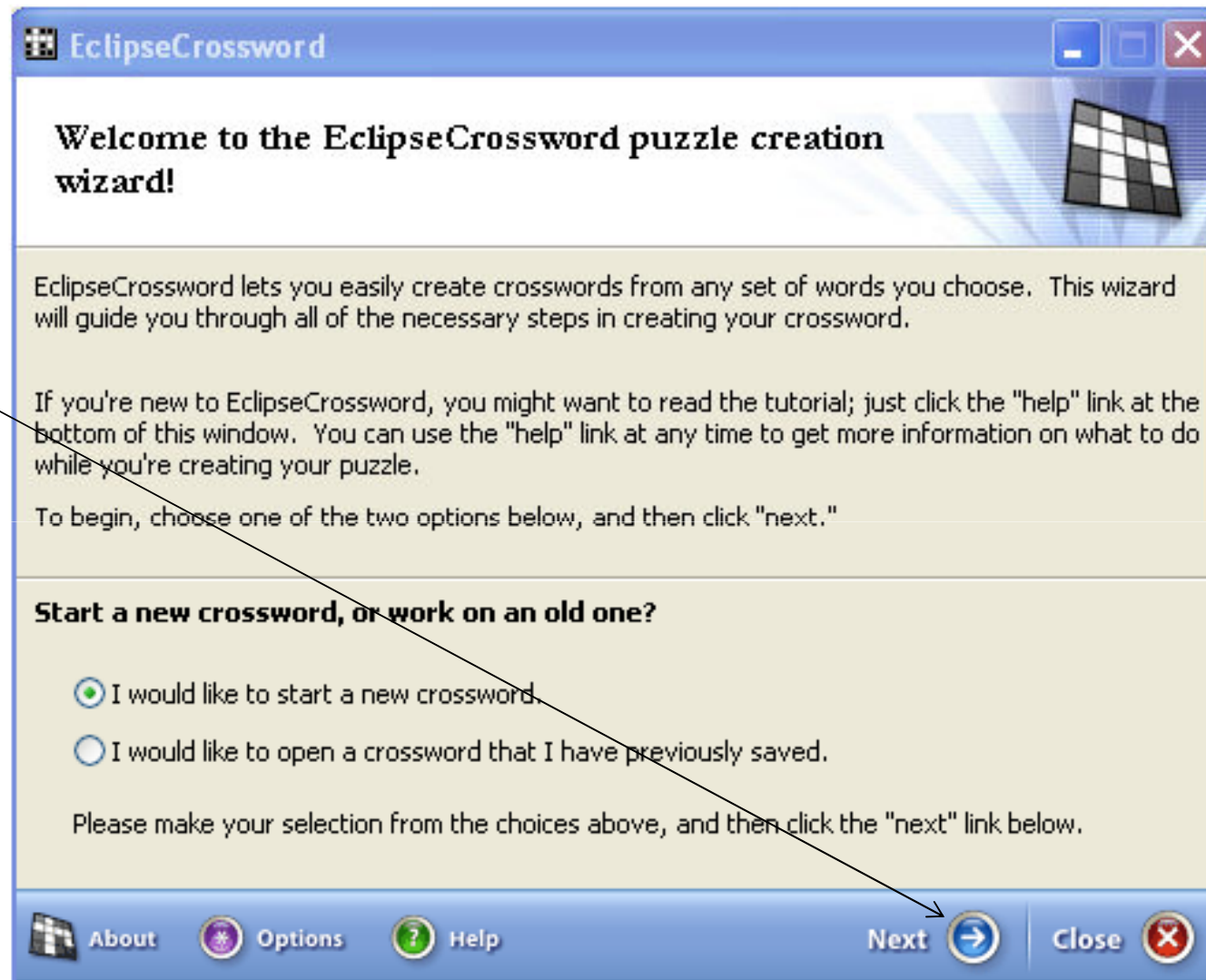
<http://www.eclipsecrossword.com/download.aspx>

- Oppure

- <http://eclipsecrossword.softonic.it/>

- Puoi installare sul tuo pc il software

Clicca su next per procedere



The screenshot shows a window titled "EclipseCrossword" with a blue header bar containing standard window controls (minimize, maximize, close). The main content area has a light beige background and is divided into sections. The top section has a blue header with the text "Welcome to the EclipseCrossword puzzle creation wizard!" and a small grid icon. Below this, there are two paragraphs of text explaining the wizard's purpose and providing instructions for new users. The third section is titled "Start a new crossword, or work on an old one?" and contains two radio button options. The first option, "I would like to start a new crossword," is selected. The second option is "I would like to open a crossword that I have previously saved." Below the options is a line of text: "Please make your selection from the choices above, and then click the 'next' link below." At the bottom of the window is a blue footer bar with several buttons: "About" (with a grid icon), "Options" (with a gear icon), "Help" (with a question mark icon), "Next" (with a right-pointing arrow icon), and "Close" (with a red 'X' icon). An arrow from the external text points to the "Next" button.

**EclipseCrossword**

**Welcome to the EclipseCrossword puzzle creation wizard!**

EclipseCrossword lets you easily create crosswords from any set of words you choose. This wizard will guide you through all of the necessary steps in creating your crossword.

If you're new to EclipseCrossword, you might want to read the tutorial; just click the "help" link at the bottom of this window. You can use the "help" link at any time to get more information on what to do while you're creating your puzzle.

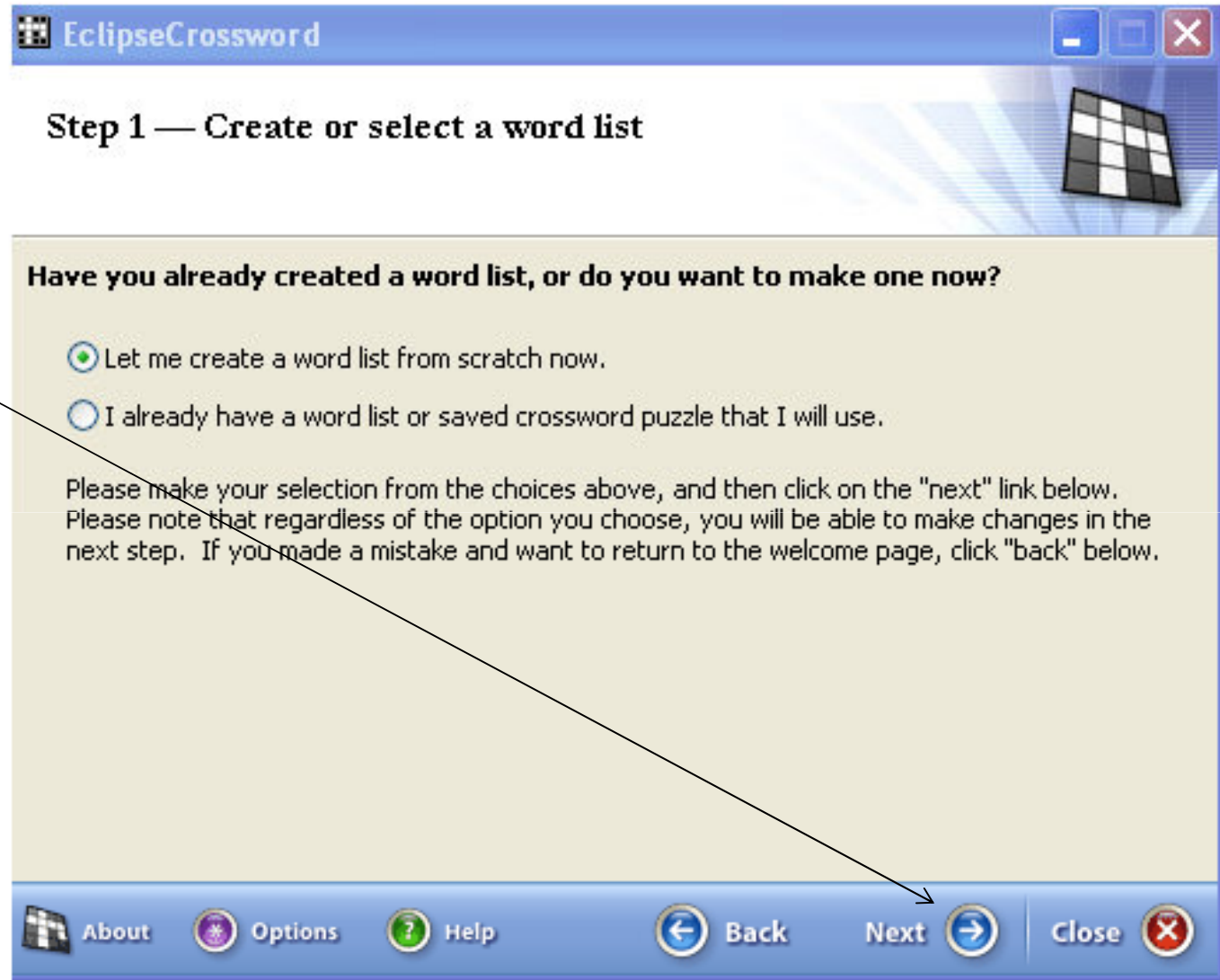
To begin, choose one of the two options below, and then click "next."

**Start a new crossword, or work on an old one?**

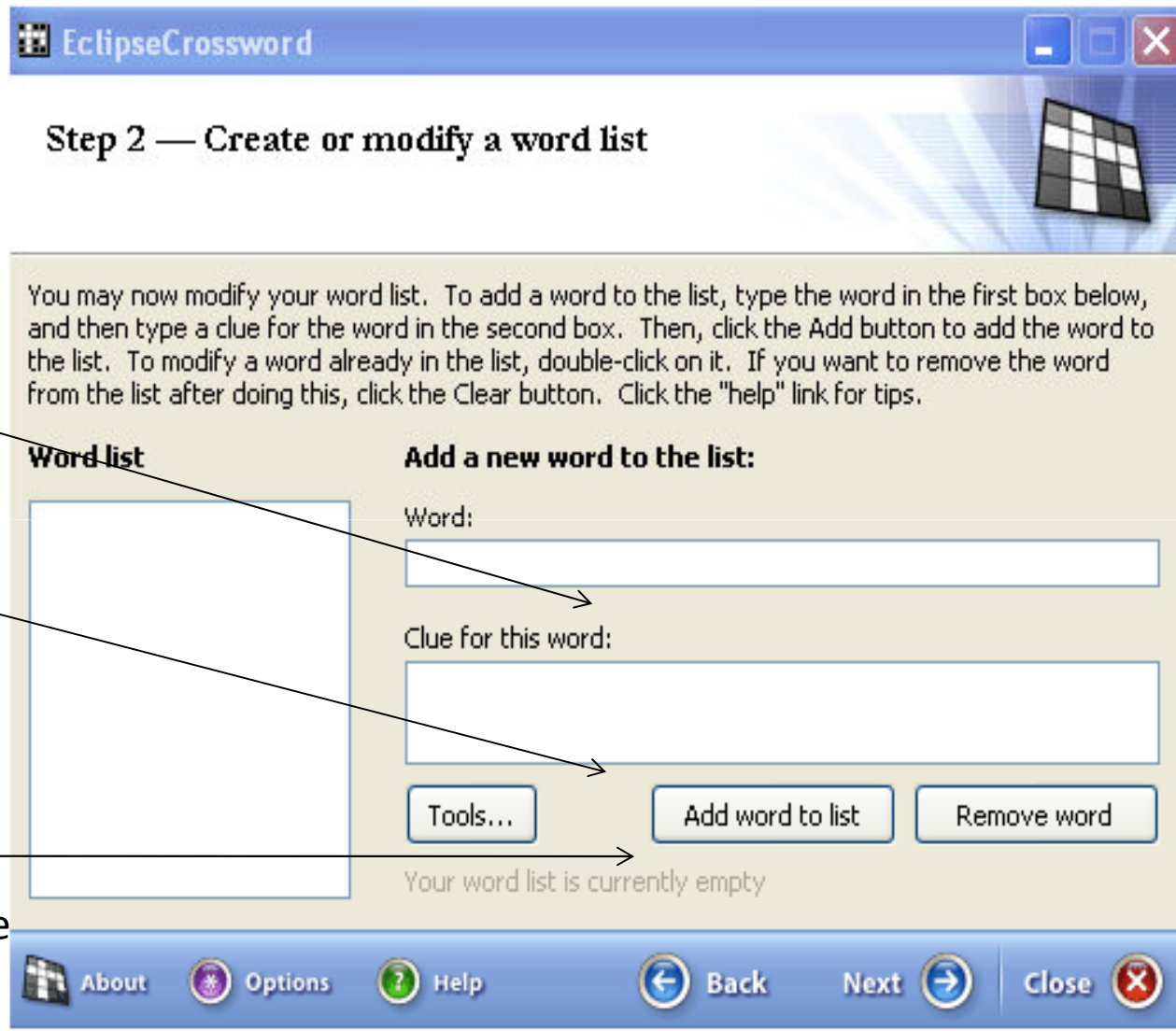
- I would like to start a new crossword.
- I would like to open a crossword that I have previously saved.

Please make your selection from the choices above, and then click the "next" link below.

About Options Help Next Close



Clicca su next per procedere



Inserisci la risposta su word

Inserisci la definizione su clue for this word

Clicca su add word to list  
Per inserire la parola nell'elenco delle parole

Procedi ad inserire parole finché non giungi al termine del tuo cruciverba

Ecco l'elenco  
delle parole che hai  
inserito

**EclipseCrossword**

### Step 2 — Create or modify a word list

You may now modify your word list. To add a word to the list, type the word in the first box below, and then type a clue for the word in the second box. Then, click the Add button to add the word to the list. To modify a word already in the list, double-click on it. If you want to remove the word from the list after doing this, click the Clear button. Click the "help" link for tips.

**Word list**

- ALLIGATORE
- CANE
- GATTO
- LUNA
- PECORA
- SOLE

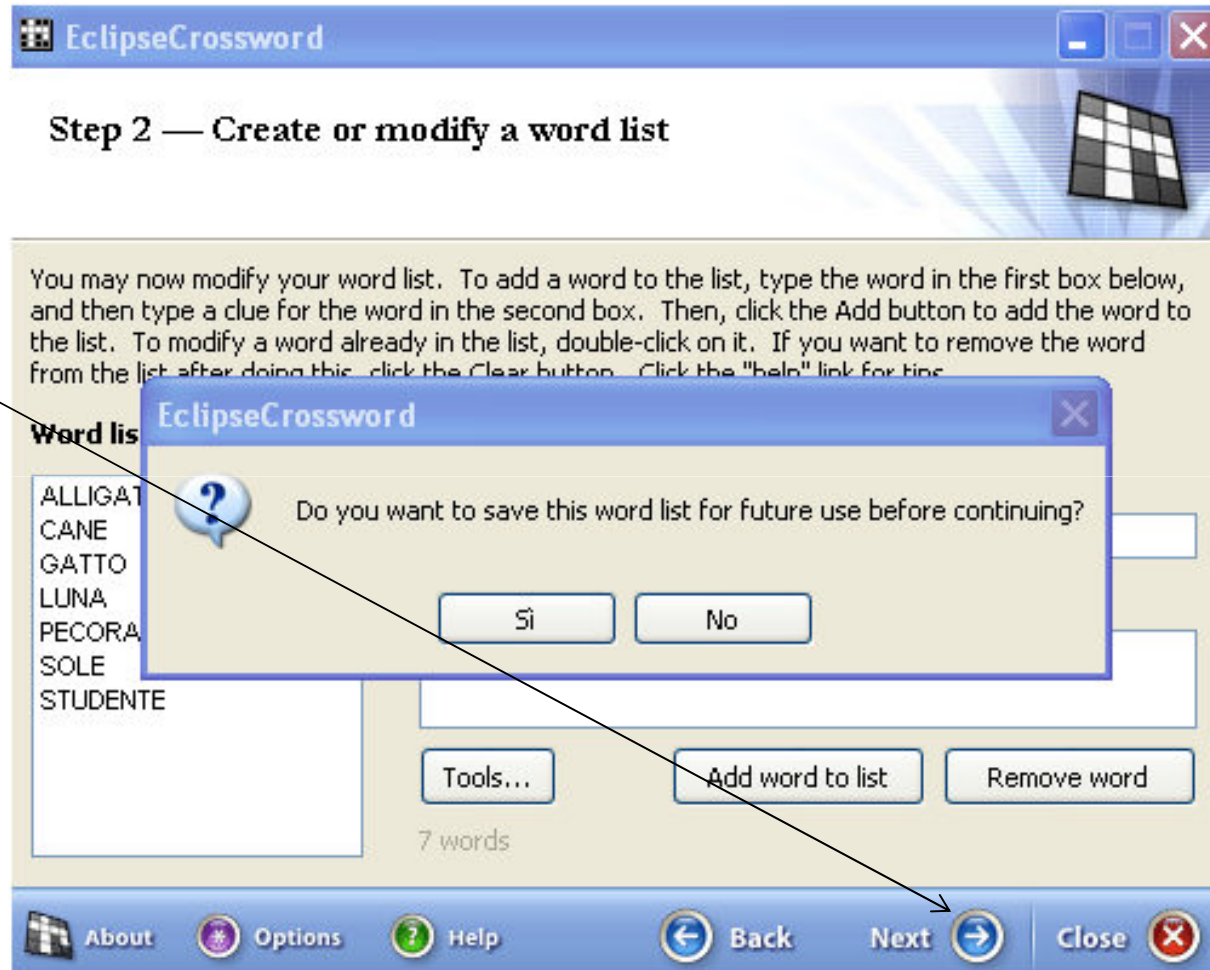
**Add a new word to the list:**

Word:

Clue for this word:

6 words

About Options Help Back Next Close



Clicca su next per procedere

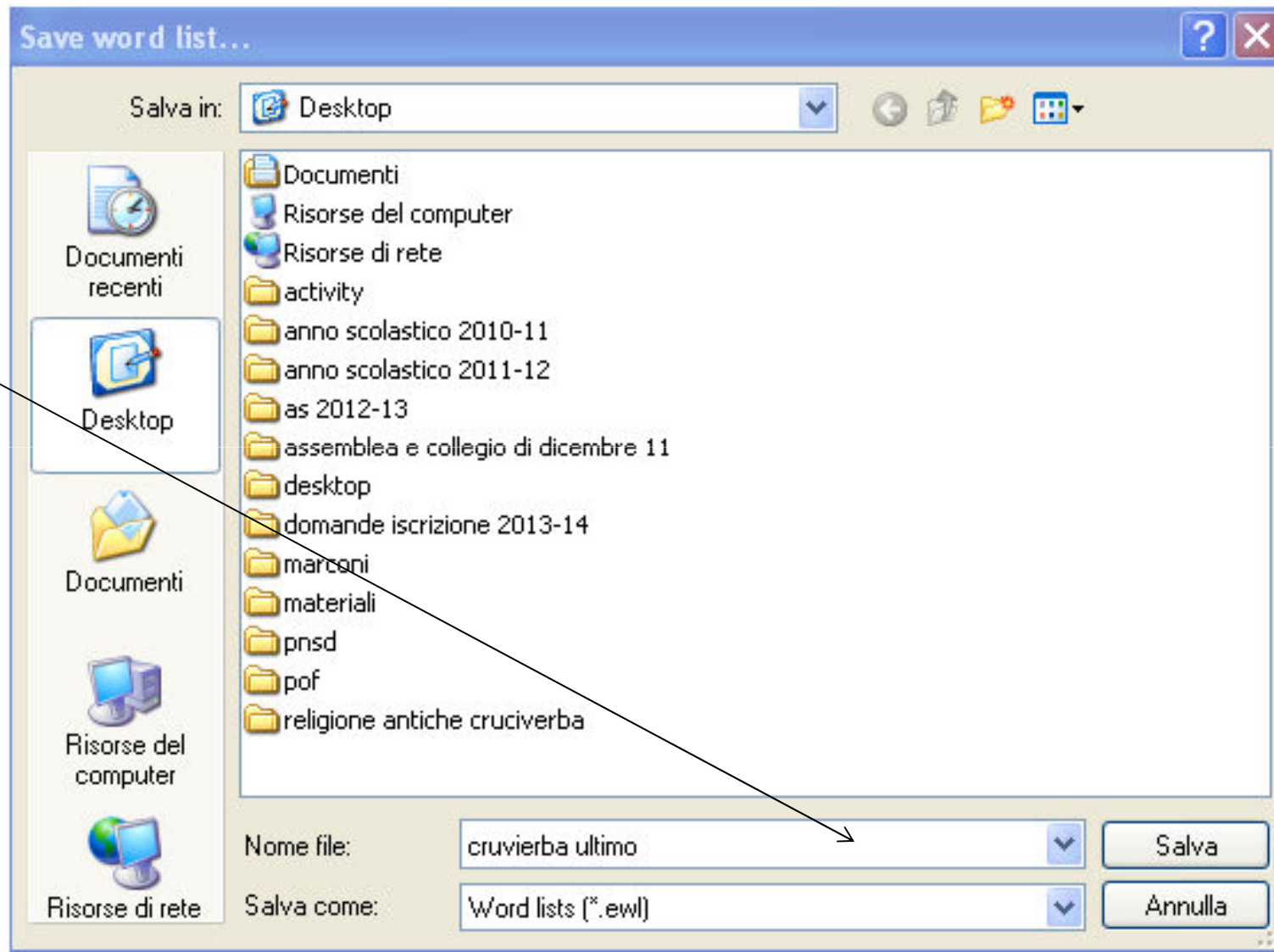
A questo punto ti viene chiesto di salvare il lavoro sino ad ora svolto

Clicca su si e procedi



Decidi dove salvare il tuo cruciverba e metti un nome al tuo lavoro

Poi digita salva





Scrivi il titolo al cruciverba

Scrivi il nome dell'autore (se lo desideri)

Clicca su next per procedere

**EclipseCrossword**

### Step 4 — Name this crossword

**What would you like to call this crossword puzzle?**

You may give this crossword puzzle a name. This name will be printed along with the crossword and clues. If you do not want to name this crossword, leave the box below blank. After you are finished, click the "next" link below.

Name of this crossword:

**Would you like to put your name on this puzzle?**

This section is optional. If you want, you can add your name to the puzzle, and your name will be shown with the printed puzzle and web pages you save. You can also add copyright date information to the puzzle for your reference, but it will not be printed.

Your name:

Copyright information:

About Options Help Back Next Close

Clicca su next per procedere

**EclipseCrossword**

### Step 5 — Define crossword size

**How big would you like the puzzle to be?**

You may choose how large the generated crossword puzzle should be. Type the maximum width and height of the crossword puzzle in the boxes below. (The resulting puzzle may be smaller than this size, but never larger.)

This crossword puzzle must be at least 10 letters square.

I want the crossword puzzle to be  letters wide, by  letters tall.

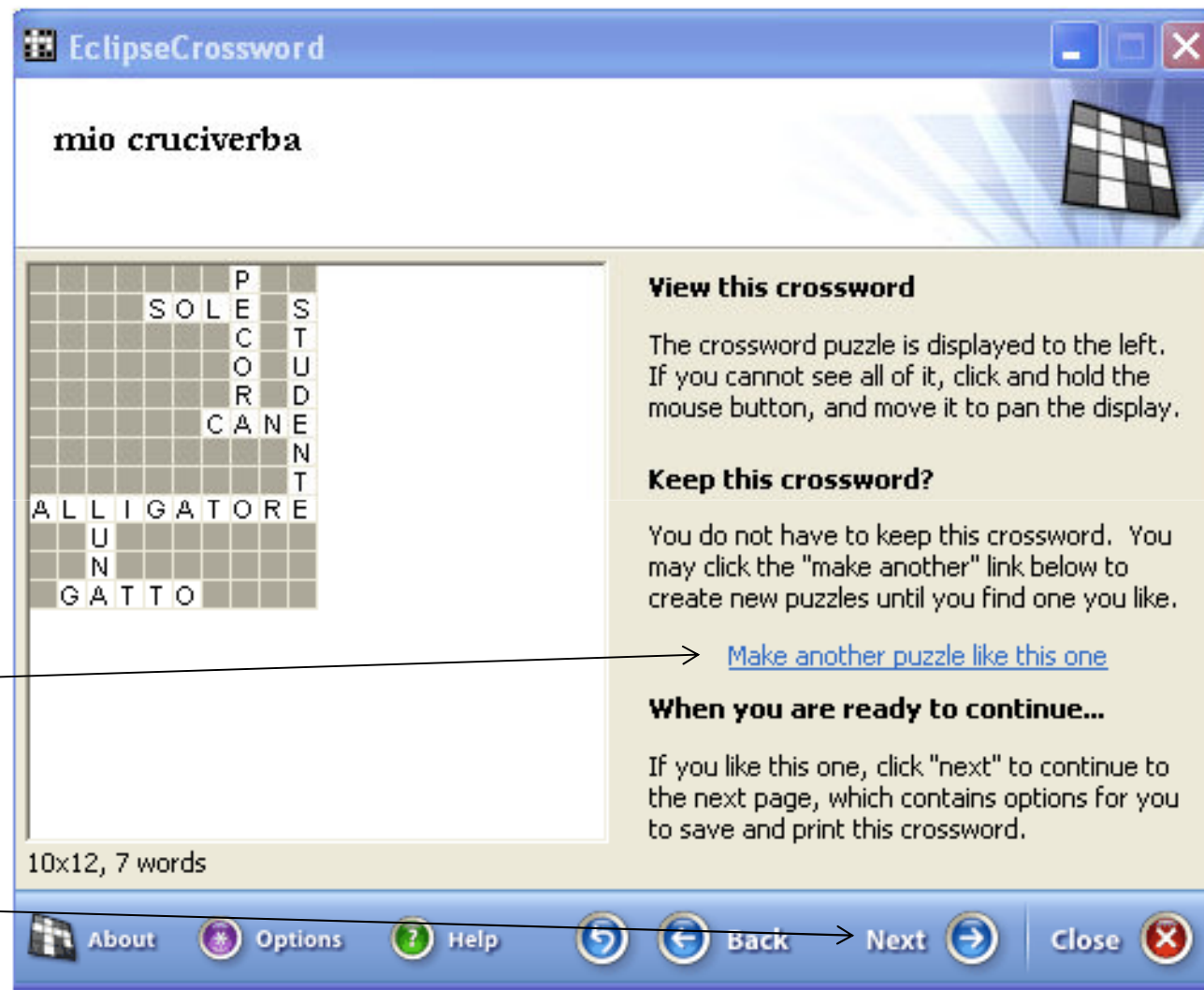
Once you are satisfied, click the "next" link below.

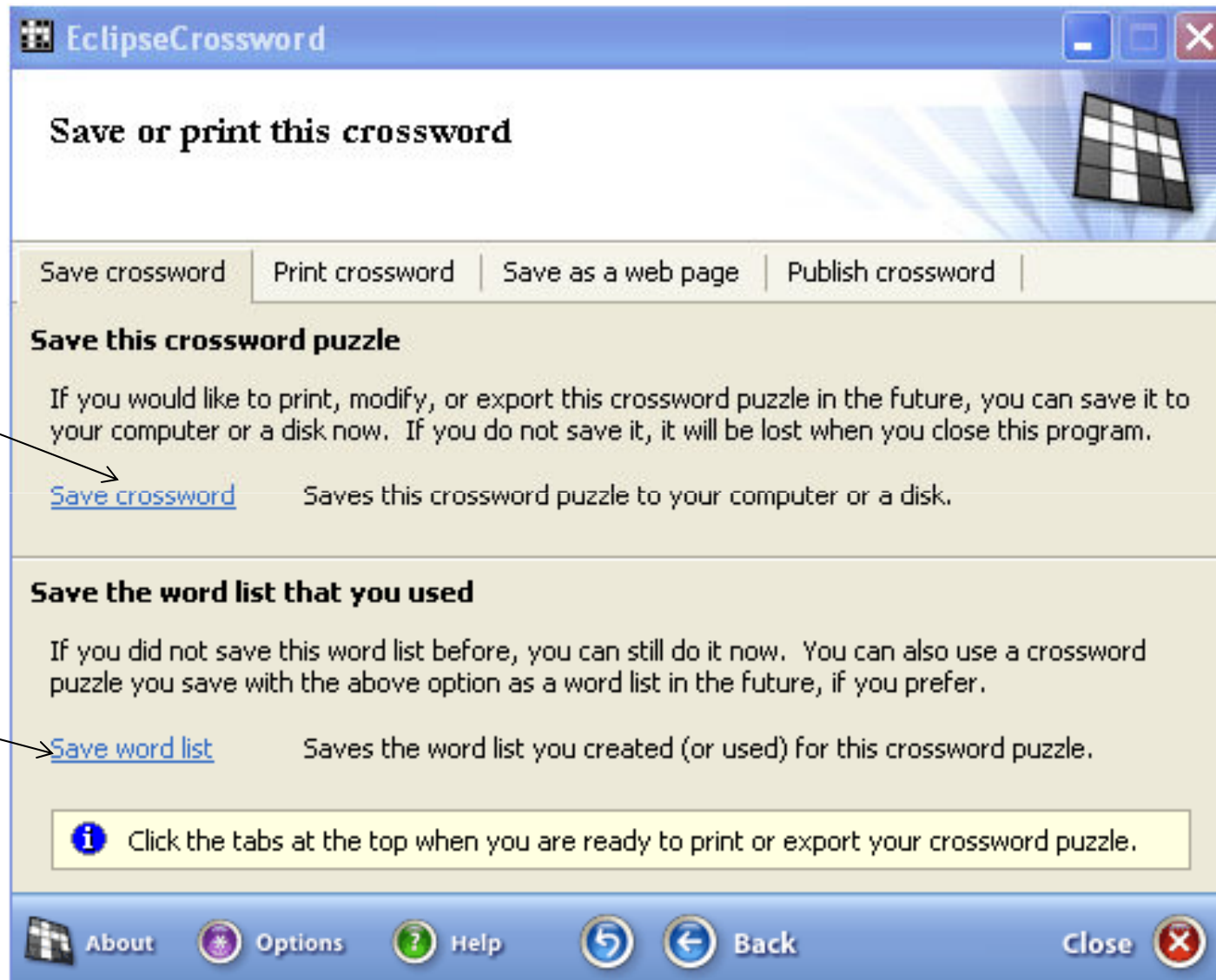
[About](#) [Options](#) [Help](#) [Back](#) [Next](#) [Close](#)

Ecco in bozza come sta venendo il tuo cruciverba

Se vuoi provare soluzioni diverse clicca su make another puzzle...

Poi vai su next per proseguire

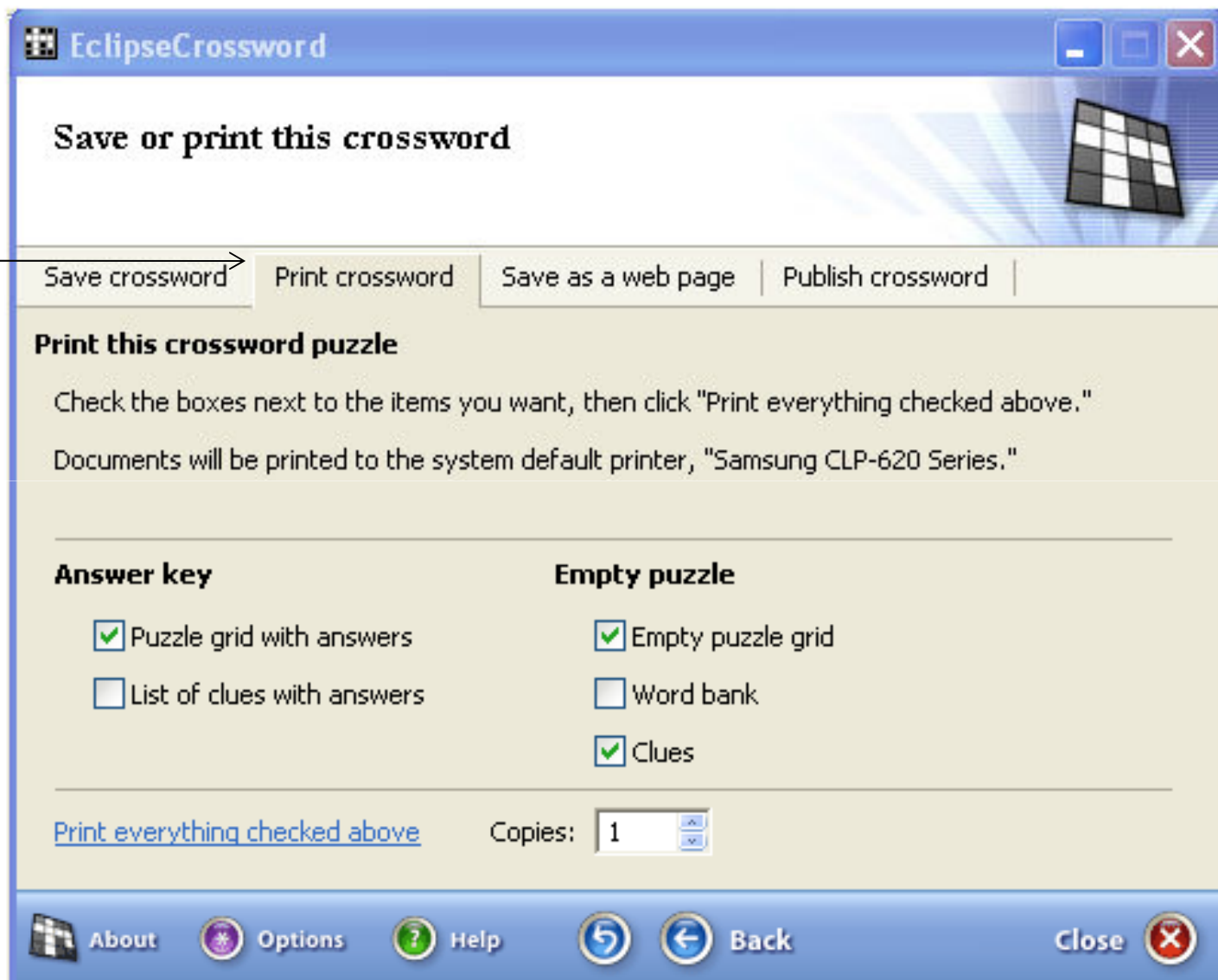




Iniziano le  
operazioni  
di  
salvataggio

Salva prima  
il cruciverba  
E poi la lista

Per stampare  
vai su Print e  
determina  
quale tipo di  
stampa vuoi  
effettuare



Ed infine puoi salvarlo nei vari formati multimediali e interattivi

Puoi ritornare quando vuoi sul tuo cruciverba e continuare il lavoro... ricorda che tutti i passaggi di salvataggio devono essere rifatti

